



# AGI

# INTERNATIONAL SCHOOL

CAMBRIDGE INTERNATIONAL EDUCATION PROGRAMME

KEY STAGES 1-3, IGCSE

# TABLE OF CONTENTS

Cambridge	<b>04-05</b>	Scholarship and applications	<b>12-13</b>
Speech and rethorics	<b>06</b>	Admission, tuition and sponsorship	<b>14-15</b>
Governance and leadership	<b>09</b>	Our mission	<b>17</b>
Core principals	<b>10-11</b>	Open House and Contact	<b>19</b>

# THE CAMBRIDGE PATHWAY



**WORLD-CLASS  
EDUCATION  
FROM EARLY  
YEARS TO  
UNIVERSITY**

The Cambridge Pathway is a globally recognised education framework for ages 5–19. It combines academic excellence with critical thinking, creativity, and global awareness, preparing students for university and life beyond school.

The pathway consists of four stages; Cambridge Primary, Cambridge Lower Secondary, Cambridge Upper Secondary (IGCSE), and Cambridge Advanced (A Level). Each stage builds on the previous one while offering flexibility to meet individual learners' needs.

## Cambridge Primary (Ages 5–11)

Cambridge Primary provides a strong foundation for academic success and personal growth. Students develop core skills in English, mathematics, and science while building confidence, curiosity, and independence.

The programme is flexible and inclusive, designed to support each child's learning style and pace.

Key Features:

- Strong foundations in core subjects
- Focus on communication, collaboration, and critical thinking
- Ongoing assessment to support individual progress
- Smooth transition to Cambridge Lower Secondary

## Cambridge Lower Secondary (Ages 11–14)

Cambridge Lower Secondary bridges primary education and upper secondary studies. Students deepen their subject knowledge while developing independence, resilience, and global awareness.

Learning is connected to real-world contexts, preparing students for Cambridge IGCSE.

Key Features:

- Broad curriculum including English, mathematics, science, ICT, and global perspectives
- Inquiry-based and project-based learning
- Focus on teamwork, leadership, and personal development
- Clear progression to Cambridge Upper Secondary (IGCSE)

## Cambridge IGCSE (Ages 14–16)

Cambridge IGCSE is a rigorous and internationally recognised qualification that prepares students for advanced studies and future careers.

Students choose from a wide range of subjects, allowing them to tailor their education to their strengths and goals.

Key Features:

- Broad subject choice across sciences, humanities, languages, and creative arts
- Emphasis on critical thinking, research, and independent learning
- Recognised by universities and employers worldwide
- Strong preparation for Cambridge A Level or BTEC

# SPEECH AND RHETORICS

At our school, developing the ability to present ideas confidently before others is a natural and integral part of everyday learning. Through speeches, debates, formal presentations, and structured discussions, teaching becomes both more engaging and intellectually varied. These methods encourage students to explore subject matter in greater depth, strengthening critical thinking and analytical skills.

At the same time, students gradually build confidence, rhetorical competence, and leadership abilities within a supportive and secure learning environment. By practising communication in authentic academic contexts, they learn not only how to express ideas clearly, but also how to listen, respond, and lead thoughtfully.

## ACADEMIC VOICE FROM THE CLASS- ROOM TO THE FUTURE

These skills extend far beyond the classroom. They provide a strong foundation for further academic study, professional life, and active participation in society, equipping students with the confidence and capabilities required to navigate future challenges with clarity and purpose.





# GOVERNANCE & LEADERSHIP

## High quality and long-term commitment

AGI International was founded with a clear ambition: to build a high-quality international school grounded in strong educational values and a global academic outlook. Quality at AGI is defined by structure, academic rigour and long-term responsibility. Clear governance, strong leadership and continuous evaluation ensure stability and consistency, creating a reliable and ambitious learning environment for every student.

## Get Ready for the World

Through years of experience in education, we have shaped a school environment where ambition, resilience and responsibility are strengthened every day. Academic growth is combined with character development, structured guidance and high expectations.

Students are supported not only to achieve strong results, but to develop confidence, independence and leadership capacity. By challenging them thoughtfully and guiding them consistently, we help them reach their full potential – and truly get ready for the world.

## WHERE DEEP EXPERIENCE SHAPES GREAT EDUCATION

Today's students need more than academic knowledge. They need confidence, resilience, leadership capacity and a strong sense of personal responsibility. They must learn to express their ideas clearly, speak with conviction and listen thoughtfully to different perspectives.

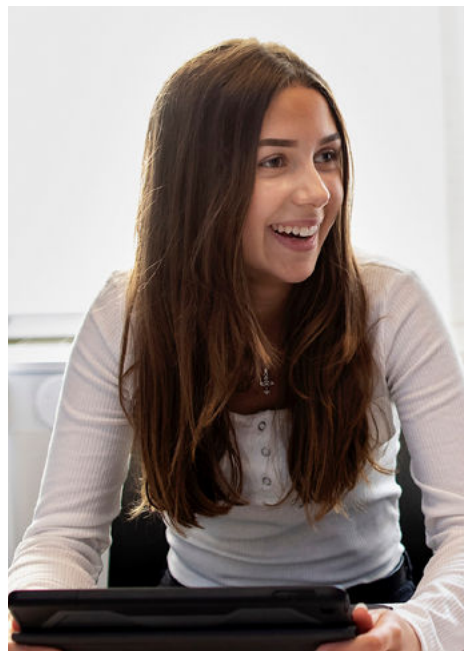
At AGI, education is designed to cultivate these qualities alongside intellectual depth. Students practice communication, collaboration and accountability every day. By taking initiative, contributing to their community and engaging respectfully with others, they grow not only as learners – but as capable, responsible individuals ready to shape the world around them.

# OUR SCHOOL IS GUIDED BY THREE CORE PRINCIPLES

## Academic Depth with Structure

At AGI International, academic ambition is grounded in clarity and structure. Deep understanding develops when expectations are clear, routines are consistent and teaching is purposeful. As students progress, particularly at A Level, they study fewer subjects in greater depth, allowing time to analyse, practise and refine their thinking.

This balance of intellectual depth and disciplined structure creates focus and confidence. Students are prepared not only for examinations, but for independent thinking and university-level study.



## Speech and Personal Leadership

Speech is more than presentation, it is training in confidence, clarity and character. From early years through A Levels, students practise structured discussion, debate and public speaking in a supportive environment. Through repetition and feedback, they gradually strengthen both their voice and their self-belief.

By learning to articulate ideas clearly and stand behind their reasoning, students develop personal leadership. They gain the confidence to contribute, take initiative and communicate effectively – skills that are essential for university, professional life and meaningful participation in society.

## Responsible Freedom

At AGI International, freedom is never separate from responsibility. Students are given increasing independence within a clear framework of shared values, expectations and adult guidance. Structure creates safety; safety creates the conditions for responsible choice. Through daily practice, students learn to take ownership of their actions,

contribute to their community and act with integrity. Responsible freedom is not simply about personal autonomy – it is training in citizenship. By combining high expectations with clear values, we help young people grow into thoughtful, accountable individuals prepared to contribute positively to society.



# AAA SCHOLARSHIP PROGRAMME

The AAA Scholarship Programme reflects AGI International's commitment to equal opportunity. Our goal is to ensure that motivated and capable students from early years through A Level, can pursue the Cambridge Pathway regardless of financial circumstances. The Scholarship exists to recognise something deeper than grades alone. It honours students who demonstrate Attitude, Ambition and Academic Potential.

The programme strengthens our community by setting a clear standard: character matters, effort matters and intellectual courage matters. AAA is not simply a scholarship. It is a reflection of the values we believe shape future leaders, students who combine knowledge with integrity and ambition with responsibility.



# APPLICATION PROCESS

The admissions journey follows our key steps:

## Pre-Register

Families may submit a pre-registration form to express interest. This allows us to provide relevant information, invitations to events and updates regarding availability.

## Formal Application

Applicants complete the online application form and submit required documentation, including academic records.

## Interview and Academic Review

Applicants are invited to an interview and, where relevant, an academic assessment. This ensures alignment between the student's goals and the demands of the Cambridge Pathway.

## Offer and Enrolment

Successful applicants receive a formal offer, followed by enrolment confirmation.

Questions about the application process?  
Email us at [info@aginternational.se](mailto:info@aginternational.se)

## ATTITUDE ATTENDANCE ACADEMIC POTENTIAL

### Attitude

A positive and responsible approach to learning, resilience, collaboration and growth.

### Ambition

Clear goals and a demonstrated commitment to personal and academic development.

### Academic Potential

The ability to thrive within a rigorous, internationally recognised academic programme. Scholarships are awarded to students who embody these qualities and contribute positively to the AGI community.





## ADMISSION CRITERIA

Our school operates under the supervision of the Swedish Schools Inspectorate and follows the Swedish Education Act for International Schools.

To be admitted, students must have temporary residence in Sweden or meet one of the following criteria:

- Stay in Sweden for a limited period
- Have previously attended school abroad
- Plan to leave Sweden for a longer period
- Use English daily at home or have sufficient English proficiency

Students must also be registered with the Swedish Tax Agency and have a Swedish personal or temporary identification number.

## TUITION AND FEES

Tuition fees at AGI International are set annually. Our tuition model reflects the academic structure, international standards and resources required to maintain high-quality teaching and student support.

In addition to tuition, a one-time application fee applies at the point of formal admission. Families may either finance tuition privately, seek support through the AAA Scholarship Programme or, where applicable, receive funding through corporate or employer sponsorship.

Students following the Cambridge curriculum are also subject to external examination fees set directly by Cambridge International. These examination fees are determined by Cambridge and are invoiced separately, as they are not included in the annual tuition.

## CORPORATE SPONSORSHIP

Many students within international academic programmes are supported through corporate or employer sponsorship. Families receiving full or partial tuition funding through corporate sponsorship are not eligible for the AAA Scholarship Programme.

Full details regarding tuition levels, payment plans and associated fees are provided during the admissions process to ensure clarity and transparency for all families.

For more information, please visit:  
[www.aginternational.se](http://www.aginternational.se)



**READY?**  
**STUDY. GO!**

## **OUR MISSION AND OUR VALUES**

At AGI International, we believe that every student carries unique potential, and that potential grows within the right structure. Our mission is to create an environment that is safe, ambitious and intellectually disciplined, where academic depth is combined with courage, kindness and curiosity.

Students are challenged to think critically, speak clearly and take responsibility for their development. From Year 10 to graduation, they present, debate, collaborate and refine their ideas. Each time they step forward, their voice strengthens, and so does their confidence.

We know that confidence is not accidental. It is built through clear expectations, consistent support and gradual exposure to challenge.

Within our international Cambridge framework, students learn not only to achieve academically, but to lead themselves with integrity and resilience.

When students feel safe, seen and guided within high expectations, they dare to grow beyond what they first believed possible. At AGI International, we do more than prepare students for academic success. We prepare them for life.

# OPEN HOUSE AND CONTACT

The most meaningful way to understand AGI is to experience the atmosphere in person. During our Open House events, you have the opportunity to explore the school environment, meet students and teachers, and gain a clear sense of how the A Level pathway works in practice.

You will learn more about subject choices, academic expectations, university preparation and student life. There will also be time to ask questions and receive individual guidance regarding your academic plans.

We encourage both students and parents to attend in order to gain a comprehensive understanding of the programme and the learning culture at AGI.

Choosing the right pathway is an important decision, and we are happy to guide you through the process. If you would like personalised advice, more detailed information about subjects, open house dates, or support with your application, please contact us directly or visit our website.

We look forward to  
hear from you.  
[info@aginternational.se](mailto:info@aginternational.se)  
[www.aginternational.se](http://www.aginternational.se)



